

16 June 2020



## Welcome to the IT Club Lockdown Newsheet!

When we started this weekly newsheet it was in the darkest days of the lockdown and the outlook was very bleak. Thankfully the situation has improved and isolation is easing and shops are opening.

Therefore this newsheet will continue to be weekly until the end of June and then it will become monthly. We will send it to you on the last Tuesday of the month to match the meetings we used to hold (and hopefully will again sometime in the future) .

There is quite a lot of information here, if you want more detail on anything, just let me know at [steven.p.dow@me.com](mailto:steven.p.dow@me.com).

We have requests to send this newsheet to other people so you can either send their email address to me or you can simply email them this pdf.

---

## Information

Our website is here : <https://ageconcernepsom.org.uk>

The coronavirus update is here: <https://ageconcernepsom.org.uk/coronavirus-update/>

If you have IT problems you can still get telephone help by ringing our office on **01372 732456** between the hours of 9.30 – 1.00, Monday to Friday. An IT volunteer will then ring you back and hopefully solve your problem.

<https://ageconcernepsom.org.uk/coronavirus-update/>

### Useful Links

Government advice: <https://www.gov.uk/coronavirus>

Age UK: <https://www.ageuk.org.uk/information-advice/coronavirus/>

The NHS has lots of information: <https://www.nhs.uk/conditions/coronavirus-covid-19/>

111 phone line website: <https://111.nhs.uk>

Livi information: <https://www.livi.co.uk>

---

## YouTube part 2

Last week we started looking at YouTube and this week we will look at a few more useful features.

To get the best from YouTube it is advisable to sign up and create an account. If you have a Google username and password then you should log on with it (YouTube being a Google company)

You can log on to YouTube at <https://www.youtube.com> but to get the best experience download the app from Apple AppStore or GooglePlay.

When signed in you will get the following options:

### Home

This will display videos based on your viewing history, news and featured videos. For example when I was researching I came across this one, which is the ultimate squirrel proof bird feeder. Its quite entertaining:

<https://youtu.be/hFZFjoX2cGg>

### Explore

A variety of different videos in categories.

Here is one from the Learning area, it is produced by The National Geographic (they have 100s of videos in YouTube) and is about birds being descendants from dinosaurs.

<https://youtu.be/eaWb0UUNc00>

### Subscriptions

This is where the channels you have subscribed to will reside. Remember - subscribing is free.

You subscribe to channels (video producers) you wish to follow and be alerted when they upload a new video. To subscribe, for example, to the National Geographic you would touch *subscribe* when it appears alongside any National Geographic video.

### Inbox

This is your YouTube inbox, not your email inbox! In here will be messages from YouTube about new videos you might be interested in.

### Library

This contains:

History - a history of videos you have watched. Useful when you want to continue a video later or if you want watch a video again- it saves re-searching. I use it for my fitness videos.

Your videos - videos **you** have uploaded to make available to the world.

Purchases - Paid for films, TV programmes appear here.

Watch later/Save - If you find a video but don't have time to watch it, select Save and it will appear in this area for later viewing.

### Share

If you find a video you would like to share with a friend select **Share**.

Copy Link will copy the unique address for you to simply paste it in an email, document or in this case here:

<https://youtu.be/kRkdY8VQx1c>

which is a short video about Matisse from the Royal Academy.

If you choose email, the link will be pasted directly in to the email, ready to be sent to any of your friends.

## YouTube on your television

If you have a set-top TV box or a smart TV you may have access to YouTube which makes viewing YouTube videos so much better.

I know many of you have Virgin TV, so you definitely will have access to YouTube:

On your remote control select Home and you get this:

Select Apps & Games then All Apps:

nb these are different Apps to those on your iPad, tablet or phone!



I have put Apps I use into My Favourite apps to make access quicker.

Everything you can do on your tablet you can do on your TV except there isn't a keyboard.

Because you are logged in under your account, the YouTube on you tablet is connected to your TV. So, for example, I might search on my iPad for a particular video, find it and save it. I can then go to my TV YouTube and the Watch Later area and there will be the video I want to watch. Wonderful!

I am afraid I do not know how Sky etc work but once your are in the YouTube app on your TV it will work in exactly the same way.

Have fun!

---

## Painting on the iPad part 2

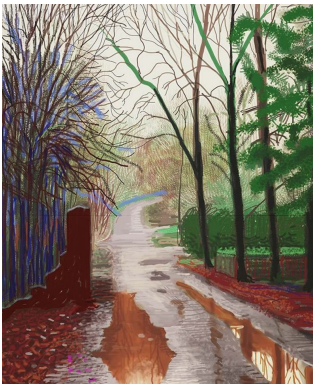
Last week we looked at painting by numbers on a tablet and this week we look at proper painting from scratch.

Here is David Hockney painting at a cafe:

The video on YouTube is here:

<https://www.youtube.com/watch?v=0jabJKtqK0k>

David Hockney is using a stylus for his rather impressionistic pictures. A stylus will cost from £10 upwards.



One of his iPad paintings

Painting with your finger can also produce amazing results. Because you can zoom into your painting on a tablet you can create extremely detailed art. This video shows how to create an eye:

<https://www.youtube.com/watch?v=Us4dZvaXWNc>

Here is an example of finger painting:



So, how do you go about creating such works of art?

Go to the Apple App store or Google Play and get a painting app. Here are some

### **Autodesk Sketchbook (free)**

One of the most popular and best. There is a bit of learning curve but amazing art can be created. Available for iPads and android tablets.

### **Drawing Desk (free)**

Available for iPads and android tablets. Very good and popular.

### **Procreate**

One of the best but it costs money. Professionals use it. If you have an Android tablet and use Google Play - beware - there are apps which have a similar name but are not the real thing.

## Query

### iPad and iPhone updates

Jane sent in a query recently:

*My settings in the 'General' section say I have an update and I should install - iPadOS13.5.1 Apple Inc and it is downloaded. It says it provides important security updates and it is recommended.*

*Further down it says **Install now**. I'm confused as it contradicts itself saying downloaded and then Install now. Please could you explain.*

I will try!

There are two parts to an update of an operating system.

**Part 1** is to get the updated programme physically onto your iPad. In the old days without broadband this was done by disc or by extremely slow and unreliable modems. Both methods could cause problems so this part has to be done successfully and checked (automatically by the system - not you!) before it can proceed to Part two.

**Part 2** is when the existing operating system on your iPad is updated (installed) by the new one. The new one has to be physically on your iPad ie downloaded, checked and ready. It goes through a process of over-writing the old parts of the programme with the new updates. This is a critical process which is why sometimes a message appears telling you not to switch off - its not good if the process stops half way through an update.

So, to summarise, after the new updates have been **downloaded** successfully, they can be **installed** and thus replace the old operating system.

This is all automatic - all you have to do is start it off (unless you have automatic updates switched on in which case you do not need to do anything at all).

This also applies to Android updates, in fact it applies to most software updates.

# Scams

## Lucky escape for Bridget's friend

*My friend was an NHS employee and had recently taken her pension. When I was with her she said she was excited having just received a tax rebate from HMRC. To access it she had to accept it by the next day.*

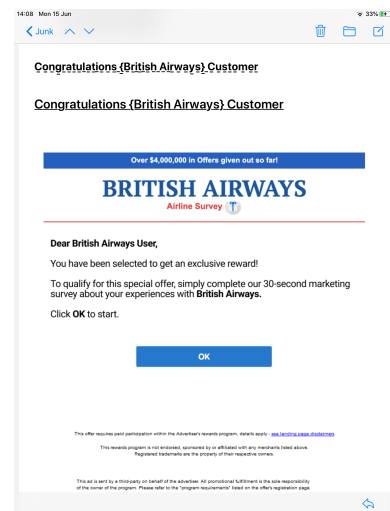
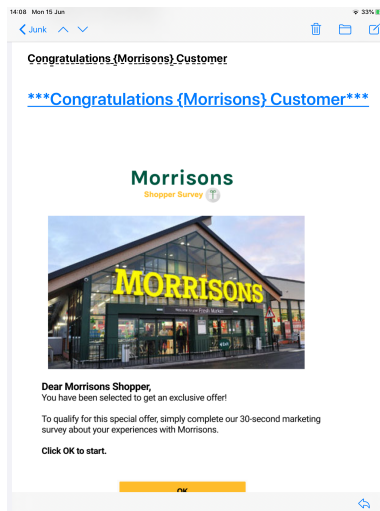
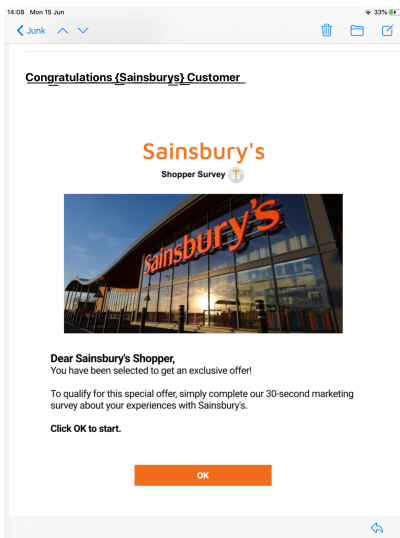
*I did say I thought that was strange as mine is paid in automatically.*

*Within the hour, she then received a message about having requested some number, which she hadn't, and then she realised it was a scam and rang her bank's fraud dept. Luckily she wasn't charged and all is well.*

It's very lucky that Bridget was there and it shows how these scams work. The *next day* requirement should set alarm bells ringing - they want you to make a quick decision without too much thought or advice.

## Contenders for worst scam awards

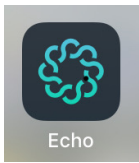
These three arrived within days of each other - they must be using the same pro-forma scam sheet!



Update: I received 3 more today!

# Health

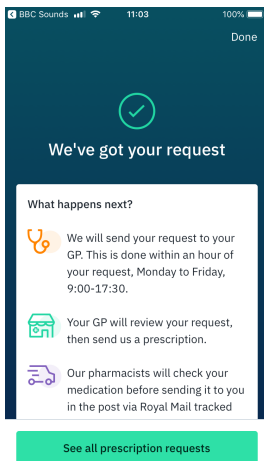
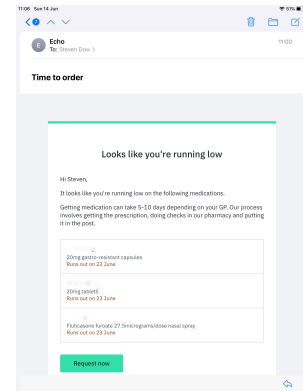
## Echo update



Echo is the popular prescription service app run by Lloyds the chemist we looked at a few weeks back. I set up my prescriptions and set a date of 23 June for when they run out.

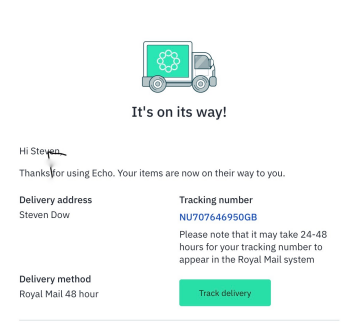
I am pleased to say that 10 days before a reminder email and text was sent to me:

I simply touched the Request Now button and confirmed I still wanted all the medications.



I quickly received confirmation and a clear reminder of what happens next:

And today (16th) I received this email:



Echo seems to be working exactly as it should!

# Shopping

## Age Concern and Amazon

Remember, If you shop at Amazon you can help us at Age Concern Epsom and Ewell by switching to [smile.amazon.co.uk](https://smile.amazon.co.uk) and they will donate a % of every purchase you make AT NO COST TO YOU.

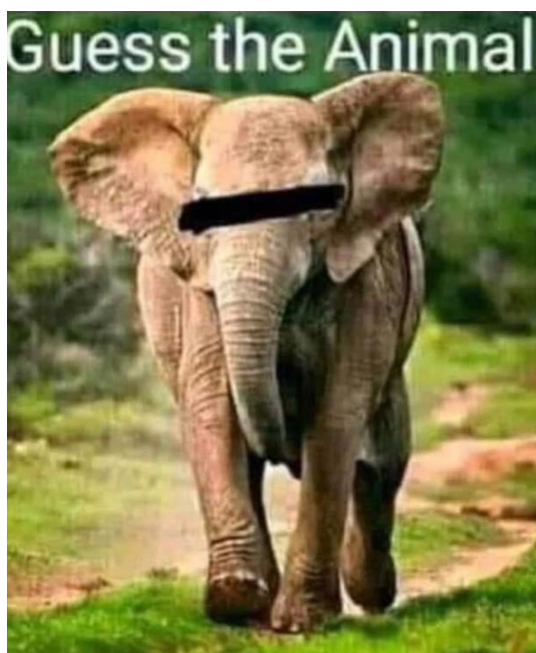
You can find out more here: <https://smile.amazon.co.uk/ch/1139652-0>





## Puzzling picture

Sometimes puzzles are very hard or obscure, or both. So this week we have made the puzzle picture a bit easier (answer is at the bottom of the newsheet).



---

## Finally

Apparently there is still rationing!



If you have any ideas, comments, suggestions please email them to me at [steven.p.dow@me.com](mailto:steven.p.dow@me.com)

See you next week!

*Picture puzzle answer: elephant*